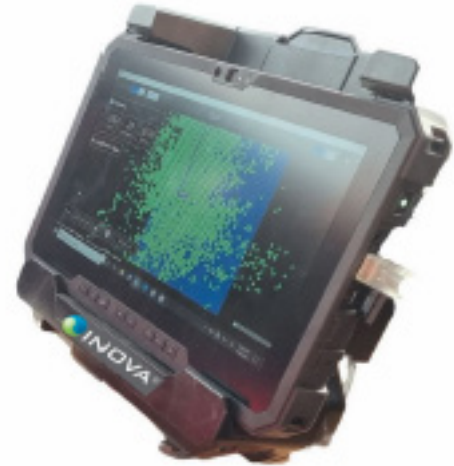


HYPERQ™

GATEWAY QC TABLET

FEATURES

- HyperQ data collection device
- Windows Operating System
- High-performance all-in-one integrated GPS device
- Ultra-rugged form factor
- Internal rechargeable battery
- 11.6 inch HD touchscreen display
- Data synchronization with iX software



SPECIFICATIONS

Operating Temperature:	0 °C to +60°C (32 °F to +140°F)
Storage Temperature:	-20°C to +65 °C (-4 °F to +149 °F)
Humidity:	0% to 95% (non-condensing)
Water:	IP65

PHYSICAL

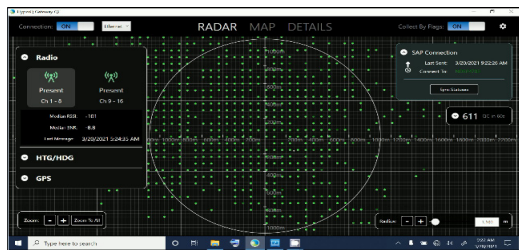
Size:	2.77 cm (D) x 31.8 cm (W) x 20.9 cm (H) (1.09" (D) x 12.52" (W) x 8.23" (H))
Weight:	1.50 kg (3.31 lb)

QC FEATURES

GATEWAY QC TABLET

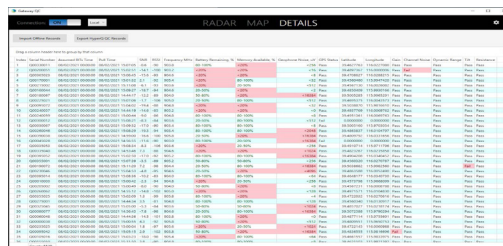
RADAR

- Graphical view of QC data received by distance
- Provides connection status to Radio, Gateway and GPS



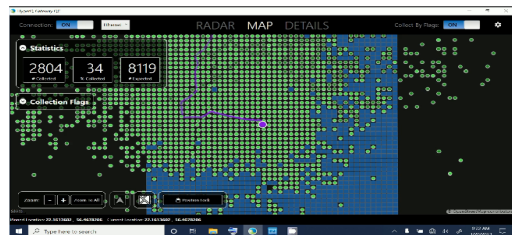
DETAIL VIEW

- Tabular view of QC data collected
- Statistics including noise, tilt, battery, memory



MAP VIEW

- Graphical view of Quantum QC status collection
- Statistics of QC data collected displayed to user



HYPERQ™

DRONE GATEWAY

FEATURES

- Long Range wireless QC of Quantum nodes supporting HyperQ
- To be installed on a drone

SPECIFICATIONS*

Input Voltage:	10 to 36 V
Operating Frequency:	868, 902 - 928 MHz
Modulation:	Chirp Spread Spectrum
Sensitivity:	-139 dBm (Spreadfactor=12,BW 125 KHz)
Channel Spacing:	200 KHz
Operating Voltage:	10 to 36 V
Power Consumption:	8 W

PHYSICAL

Size:	12.95 cm (L) x 14.49 cm (W) x 4.06 cm (H) (5.1" (L) x 5.7" (W) x 1.6" (H))
Weight:	390g (0.85 lbs, gateway only)
Total Weight:	491g (1.08 lbs, antenna,cabling, gateway, mounting kit)
Operating Temperature:	-30 °C to +65°C (-22 °F to +149 °F)
Storage Temperature:	-45 °C to +85 °C (-49 °F to +185 °F)
Humidity:	0 to 95% (Condensing)



*Typical specifications @ 25 °C

HYPERQ™

TRUCK GATEWAY

FEATURES

- Long Range wireless QC of Quantum nodes supporting HyperQ
- Adaptable to mobile or fixed in-field platforms - Vehicles, Masts or Others

SPECIFICATIONS*

Input Voltage:	10 to 36 V
Operating Frequency:	868, 902 - 928 MHz
Modulation:	Chirp Spread Spectrum
Sensitivity:	-139 dBm (Spreadfactor=12,BW 125 KHz)
Channel Spacing:	200 KHz
Operating Voltage:	10 to 36 V
Power Consumption:	8 W

PHYSICAL

Size:	20.32 cm (L) x 14.49 cm (W) x 4.06 cm (H) [8" (L) x 5.7" (W) x 1.6" (H)]
Weight:	740g (1.63 lbs, gateway only)
Operating Temperature:	-30 °C to +65°C [-22 °F to +149 °F]
Storage Temperature:	-45 °C to +85 °C [-49 °F to +185 °F]
Humidity:	0 to 95% (Condensing)



*Typical specifications @ 25 °C

HYPERQ™

SEISMIC ACCESS POINT (SAP)

FEATURES

- Long range wireless communication device for HyperQ
- Transfer of QC Data from Gateway QC tablet
- Hot swappable batteries

SPECIFICATIONS

Operating Frequency:	410-480 MHz
Operating Voltage:	9 to 18 V
Modulation:	2FSK or 4FSK selectable
Sensitivity:	-115 dBm @ 9.6 Kbps and 12 KHz channel spacing
Channel Spacing:	6.25 or 12.5 KHz selectable
Maximum Transmit power:	2 W (+33 dBm)

PHYSICAL

Size:	21cm (L) x 18 cm (W) x 9 cm (H) (8.25" (L) x 7" (W) x 3.5" (H))
Weight:	2.1kg (4.6 lbs)
Operating Temperature:	-40 °C to +60 °C (-40 °F to +140 °F)
Storage Temperature:	-45 °C to +85 °C (-49 °F to +185 °F)



*Typical specifications @ 25 °C