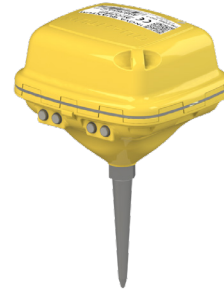


ACCUSEIS SENSOR OPTION

FEATURES

- All-in-one single component recording unit with internal MEMS sensor
- Operated through INOVA's iX Studio command and control software
- Patented MEMS accelerometer and custom electronics to record P-wave data
- Offers flat amplitude and phase response over a wide frequency range
- Insensitivity to tilt-degradation enables faster deployment



GENERAL SPECIFICATIONS

No.of Digital Channels:	1
Data Storage Capacity:	16 GB non-volatile flash memory
Integrated Battery:	Rechargeable Li-ion
Battery Life:	23 days typical, 24 Hr operation
Wireless Communication:	Bluetooth LE, HyperQ
GPS:	L1-GPS /QZSS, GLONASS, BeiDou, Galileo
Timing Accuracy:	+/-20 μ s
Charging Temperature:	+5 °C to + 40°C
Operating Temperature:	-40 °C to + 70 °C
Water Immersion:	IP68 (fresh water only)

PHYSICAL

Size:	10.9 cm x 9.8 cm x 8.61 cm (Excl. spike) (4.3" x 3.9" x 3.4")
Weight:	0.48 kg (1.06lbs) incl internal battery and MEMS accelerometer

SENSOR SPECIFICATIONS

Digital Quantization:	24-bits
Sample Rate:	1 ms, 2 ms, or 4 ms
Time Standard:	Phase locked to GPS clock
Full Scale (Peak):	3.3 m/s ² (335 mG)
Noise:	0.3 μ m/s ² /√Hz (30nG/√Hz) 3 Hz to 400 Hz
Dynamic Range:	118 dB
Frequency response:	0 to 400 Hz
Digital High-Cut Filter:	0.82 Nyquist
Total Harmonic Distortion:	< -100 dB
Filter Options	Minimum or Zero Phase

AUTOMATED TESTS

Unit temperature, sensor tilt, sensor noise , auto DC offset calibration, response accuracy test.